

PDGA
PROFESSIONAL DISC GOLF ASSOCIATION

A-TIER



DGMT
DISC GOLF MASTERS TOUR

**Music City
Open 2024**
LONE STAR
DISC

CADDIE BOOK

MAY 10-12
NASHVILLE, TENNESSEE

TM, Event Production of Music City Disc Golf

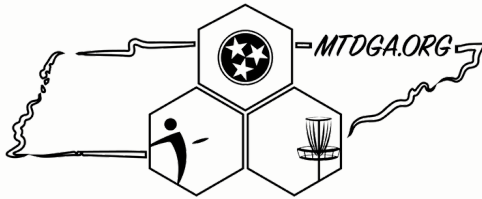




PRESENTED BY:

**LONE STAR
DISC**

Music City Open Sponsors



TEE BOX SOX



DISRESPECT



Music City Open Staff

Tournament Director

Mitch Baker - (615) 578-6662

Assistant TD

Zachary Hoy - (714) 398-7809

Course TDs

Cane Ridge

TD - Robert Zavala - (615) 812-6153

Asst. - John Mosby - (601) 937-0877

Cedar Hill

TD - Wil McKaskle - (615) 853-3525

Asst. - Patrick Belding - (859) 620-0948

Seven Oaks

TD - Aaron McDonald - (318) 560-4997

Asst. - Darrell Crutcher - (615) 919-1771

Sharp Springs

TD - Jay Skinner - (615) 961-5810

Asst. - Ed Burde - (615) 809-8942

Two Rivers/Naval Hill

TD - Ruth Miller - (615) 337-8091

Asst. - Ryan Stahr - (615) 972-8310

MCO Headquarters

Whitney Likehart - (615) 668-0717

Memphis Likehart - (615) 668-7987

Music City Open HQ

*Nashville Armored Combat
2416 Music Valley Drive, Suite 144
Nashville, TN 37214*

Check-In/Player Pack Pick Up

Thursday, May 9th 8am-4pm

(All Players that are unable to Check in on Thursday MUST Check-In at Hole 1 of their starting course at least 30 minutes prior to their Round 1 Tee time.)

Friday, May 10th 8am-4pm

Saturday, May 11th 8am-noon

Fly Party & Music City Mega Raffle

Saturday, May 11th 4pm-8pm

The Fly Party will be the last opportunity to pick up your Players Pack. There will be NO Players Pack pick-up on Sunday.

Pools

Pool	Divisions	Friday, May 10	Saturday, May 11	Sunday, May 12
A	MP40, FP40, MP50, FP50, MP60	Cane Ridge Advanced	Sharp Springs	Cedar Hill
B	MA1, MA40	Cedar Hill	Cane Ride Advanced	Sharp Springs
C	MA50, MA2	Two Rivers	Cedar Hill	Seven Oaks
D	FA1, FA40, FA50, MA60, MA3	Sharp Springs	Seven Oaks	Two Rivers
E	MA70, FA2, FA3, MA4, FA4, MJ18, MJ15, MJ12, MJ10	Seven Oaks	Naval Hill	Cane Ridge Short

PDGA[®]

Live Scoring

[PDGA.com/score](https://pdga.com/score)

Access Code: MCO24

All players MUST keep score. PDGA Digital Scoring will be the official scorekeeping method.

If there is a rules question while on the course, play a provisional and discuss with Course TD before submitting your scorecard.

All players MUST finalize the scorecard when the round is over. The scorecard is not submitted until ALL scorers submit their card.



FLY PARTY!

Come Check Out This Year's Vendors!

SATURDAY
MAY 11

4:00PM - 8:00PM

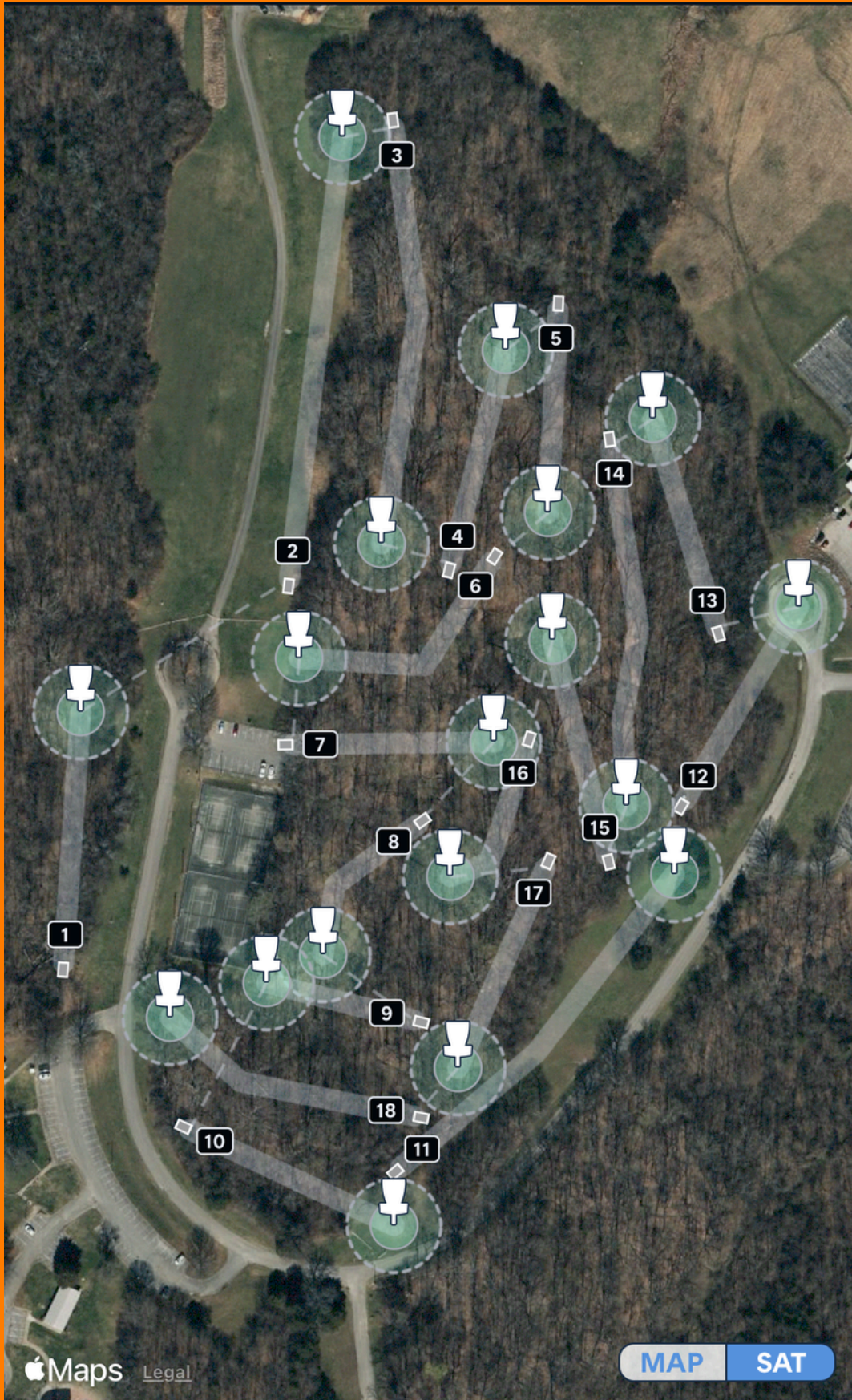
2412 MUSIC VALLEY DRIVE,
NASHVILLE, TN 37214



"A Proud Production of Music City Disc Golf"



CANE RIDGE ADV.



419 Battle Road, Antioch, TN 37013

CANE RIDGE ADV.

Hole	Par	Length	Notes
1	3	353	
2	4	622	OB road and beyond.
3	4	596	Water is casual.
4	3	308	
5	3	286	Water is casual.
6	4	391	
7	3	247	
8	3	244	Water is casual.
9	3	192	Water is casual.
10	3	296	OB road and beyond.
11	4	574	OB road and beyond.
12	3	316	All Grass is In Bounds. All Asphalt/Concrete is HAZARD. On any throw, if disc comes to rest completely in HAZARD area, play from where disc lies with a +1 stroke penalty.
13	3	274	Water is casual.
14	4	498	
15	3	269	
16	3	224	
17	3	284	
18	3	387	OB road and beyond.

CANE RIDGE SHORT



419 Battle Road, Antioch, TN 37013

CANE RIDGE SHORT

Hole	Par	Length	Notes
1	3	210	Water Casual
2	4	490	Water Casual
3	3	150	Water Casual
4	3	200	
5	3	234	OB Road and Beyond. OB Parking Lot.
6	4	280	Water Casual
7	3	162	
8	3	175	Water Casual
9	3	200	
10	3	212	OB Parking Lot.
11	3	229	OB Road and Beyond. OB Parking Lot.
12	3	240	OB Road and Beyond.
13	3	121	
14	3	200	Water Casual
15	3	193	Water Casual
16	3	130	
17	3	133	
18	4	278	Water Casual

CEDAR HILL

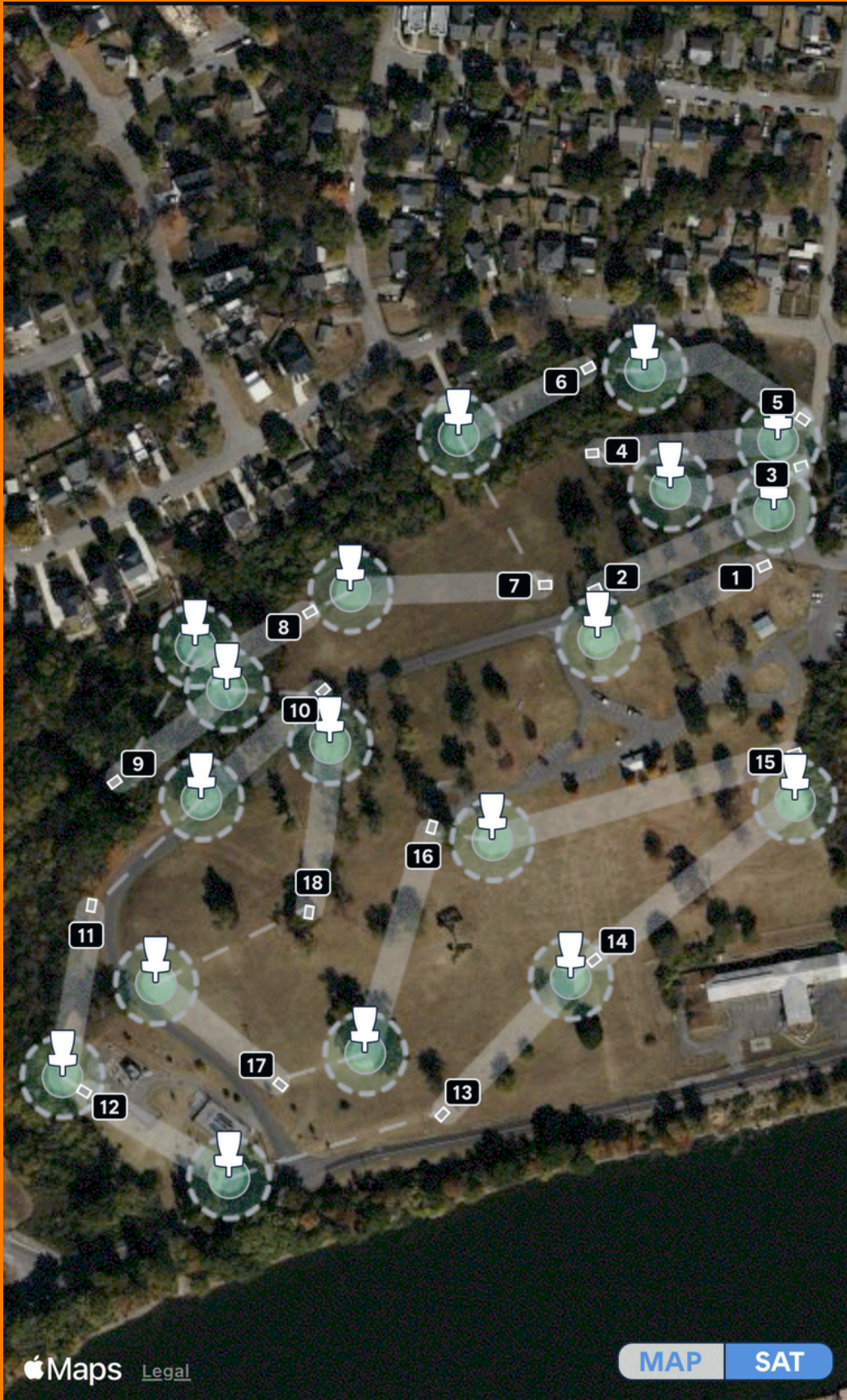


860 Old Hickory Boulevard, Madison, TN 37115

CEDAR HILL

Hole	Par	Length	Notes
1	3	355	OB Road and Beyond. Parking Lot OB.
2	4	490	Water is casual.
3	3	270	OB Road and Beyond.
4	3	347	
5	3	225	Over fence is OB.
6	3	275	
7	4	612	OB Road and Beyond.
8	4	421	OB Road and Beyond.
9	5	602	OB Road and Beyond. Parking Lot OB.
10	4	527	OB Road and Beyond.
11	3	210	
12	3	308	
13	3	283	
14	3	329	OB Road and Beyond.
15	4	674	OB Road and Beyond.
16	3	323	OB Road and Beyond.
17	3	428	Inside or on Pavilion OB. Road and Beyond OB. Parking lot OB.
18	5	773	OB Road and Beyond. Parking Lot OB.

NAVAL HILL

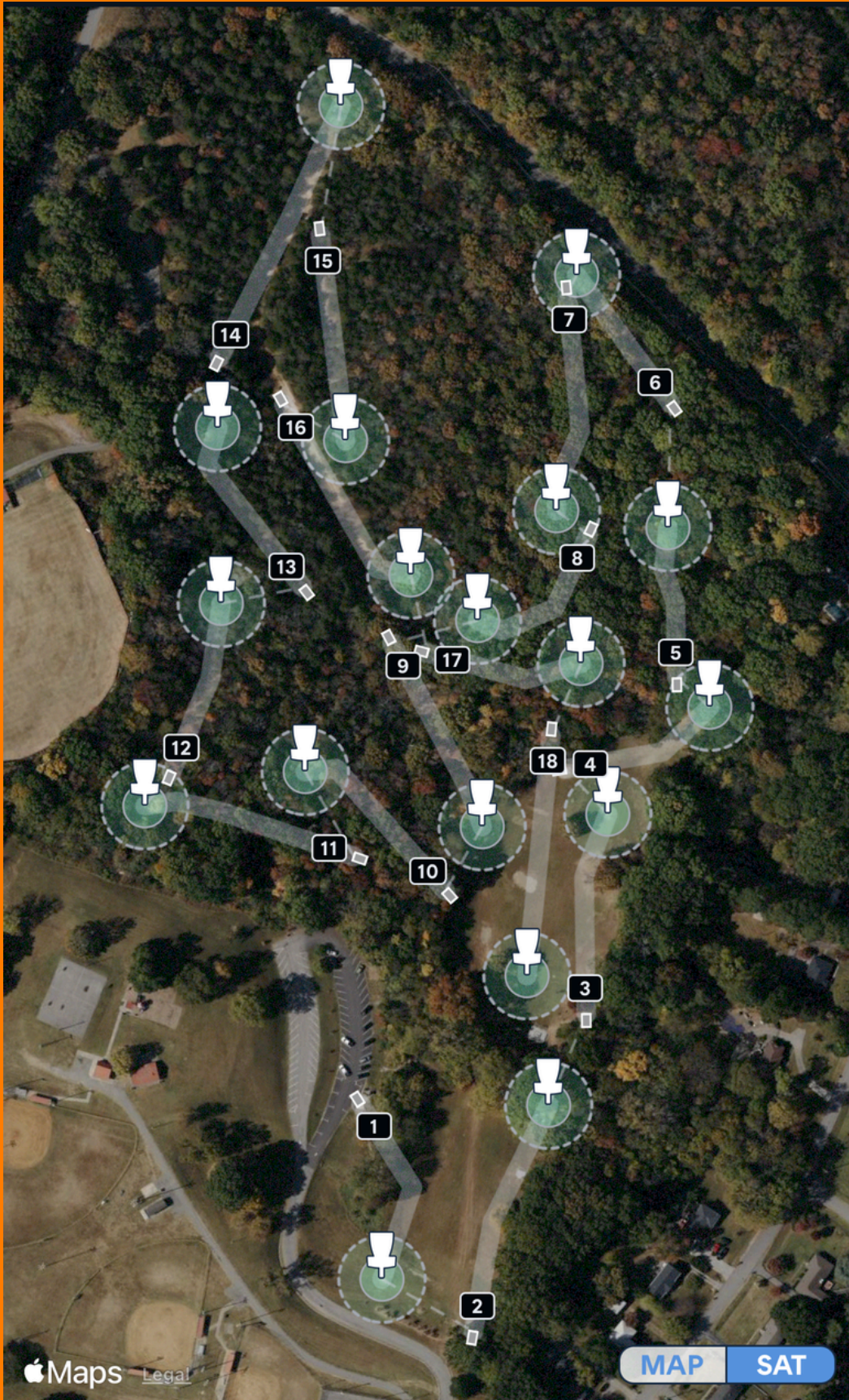


1752 Sevier Street, Nashville, TN 37206

NAVAL HILL

Hole	Par	Length	Notes
1	3	286	OB - Road & Beyond, Pavilion, Mando LEFT of tree
2	3	310	OB - Road & Beyond, Mando LEFT of tree
3	3	212	OB - Road & Beyond
4	3	296	OB - Road & Beyond
5	3	289	OB - Road & Beyond
6	3	233	OB - Over Fences, Creek is Casual
7	3	309	OB - Road & Beyond
8	3	204	
9	3	220	OB - Road & Beyond
10	3	257	OB - Road & Beyond
11	3	274	OB - Over Fences, Road & Beyond
12	3	266	OB - Over Fences, Road & Beyond
13	3	281	OB - Over Fences, Road & Beyond
14	4	409	OB - Over Fences
15	4	505	OB - Pavilions, In/Over Parking Lot, Over Fences, Road & Beyond
16	3	373	OB - Road & Beyond
17	3	252	OB - Road & Beyond
18	3	276	OB - Road & Beyond

SEVEN OAKS



1281 School Lane, Nashville, TN 37217

SEVEN OAKS

Hole	Par	Length	Notes
1	3	296	OB parking lot/road and beyond.
2	3	367	OB road and beyond.
3	3	312	
4	3	249	
5	3	233	Concrete tee pad.
6	3	242	OB road and beyond.
7	C-3/D&E-4	340	
8	3	250	
9	3	312	Water Casual
10	3	297	Water Casual
11	3	331	
12	3	270	
13	3	295	Water Casual
14	C-3/D&E-4	427	Water Casual. Follow gravel path to next hole. OB road and beyond.
15	3	316	
16	3	340	Water Casual
17	3	242	
18	3	368	OB parking lot and beyond. Water Casual

SHARP SPRINGS A&B

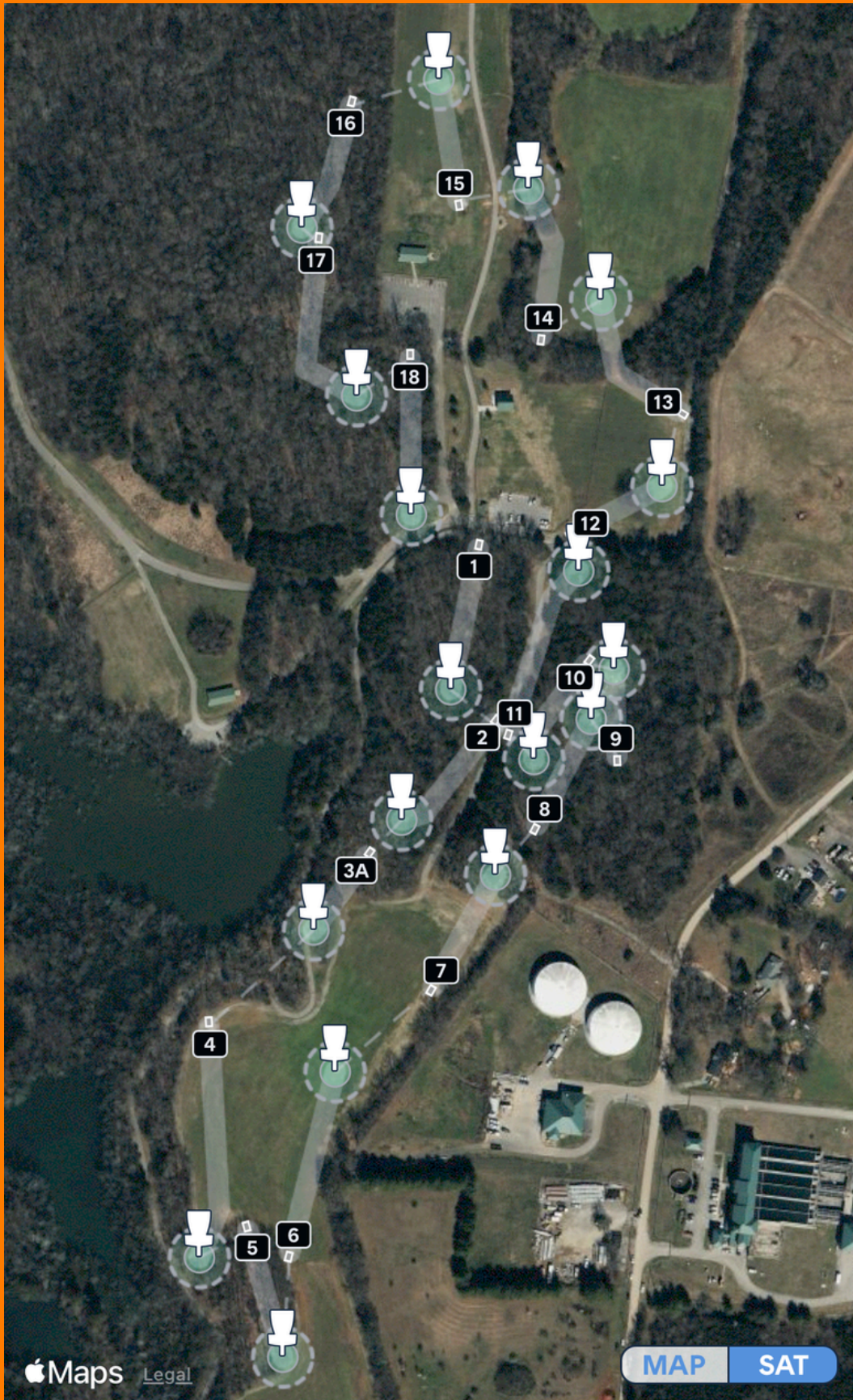


311 Jefferson Pike, Smyrna, TN 37067

SHARP SPRINGS A&B

Hole	Par	Length	Notes
1	3	316	Water Casual
2	3	303	
3	3	279	OB surrounded by water. Play from last in-bounds or proceed to Drop Zone with one stroke penalty
4	4	520	
5	3	290	Double Mando. If Mando is missed, proceed to Drop Zone with one stroke penalty.
6	3	411	OB fence on right side. DO NOT ATTEMPT TO RETRIEVE DISCS OVER FENCE!
7	3	282	OB fence on right side. DO NOT ATTEMPT TO RETRIEVE DISCS OVER FENCE!
8	3	263	Surrounded by water is OB.
9	3	192	Surrounded by water is OB.
10	3	250	Surrounded by water is OB.
11	3	391	OB on or beyond paved walking path long of basket.
12	3	217	OB on or beyond paved walking path.
13	3	328	
14	3	337	OB on or beyond paved walking path.
15	3	271	OB on or beyond paved walking path.
16	3	294	
17	4	409	Water Casual
18	3	345	OB on or Beyond road behind basket.

SHARP SPRINGS D



311 Jefferson Pike, Smyrna, TN 37067

SHARP SPRINGS D

Hole	Par	Length	Notes
1	3	316	Water Casual
2	3	303	
3A	3	201	Double Mando. If Mando is missed, proceed to Drop Zone with one stroke penalty.
4	4	520	
5	3	290	Double Mando. If Mando is missed, proceed to Drop Zone with one stroke penalty.
6	3	411	OB fence on right side. DO NOT ATTEMPT TO RETRIEVE DISCS OVER FENCE!
7	3	282	OB fence on right side. DO NOT ATTEMPT TO RETRIEVE DISCS OVER FENCE!
8	3	263	Surrounded by water is OB.
9	3	192	Surrounded by water is OB.
10	3	250	Surrounded by water is OB.
11	3	391	OB on or beyond paved walking path long of basket.
12	3	217	OB on or beyond paved walking path.
13	3	328	
14	3	337	
15	3	271	OB on or beyond paved walking path.
16	3	294	
17	4	409	Water Casual
18	3	345	OB on or Beyond road behind basket.

TWO RIVERS



2320 Two Rivers Parkway, Nashville, TN 37214

TWO RIVERS

Hole	Par	Length	Notes
1	3	262	OB on or beyond fence/shelter. OB surrounded by pavement. Do not attempt to retrieve disc beyond fence.
2	3	305	OB on or beyond fence/road. Do not attempt to retrieve disc beyond fence.
3	4	612	OB on or beyond fence/path. Do not attempt to retrieve disc beyond fence.
4	3	239	OB on or beyond path/shelter.
5	3	345	
6	3	310	OB on or beyond fence/road.
7	3	300	OB on or beyond road/path/playground/shelter.
8	3	259	OB on or beyond road/path/shelter.
9	3	337	OB on or beyond road/path/fence/playground/shelter/parking lot.
10	3	261	OB on or beyond road/path.
11	3	229	OB on or beyond path.
12	4	423	OB on or beyond road/path.
13	3	343	OB on or beyond road/path.
14	3	326	OB on or beyond fence/path.
15	3	228	OB on or beyond fence/path/shelter.
16	3	307	OB on or beyond road/path/playground/shelter.
17	3	333	OB on or beyond road/path/shelter. OB inside or on pavilion/bathroom.
18	3	316	OB on or beyond road/path/playground/shelter.

After the completion of Round 3, if there is a tie for 1st place in a division, Sudden Death Playoff will ensue.

Players from other divisions that are still on the course should allow a Playoff to 'Play Through'

Playoffs will consist of a series of holes played on loop until the tie is broken.

Playoff Holes

Cane Ridge Short

1,16,17,18

Cedar Hill

1,2,18

Seven Oaks

1,2,3,18

Sharp Springs

1,2,3,11

Two Rivers

5,6,7,8



A PROUD
PRESENTATION OF



The Music City Disc Golf Club is a 501(c)3 certified non-profit established in 2012. Our organizations is dedicated to the growth and betterment of disc golf in the Nashville area.

For more information, visit us at
www.musiccitydiscgolf.com